

Health industries: An applied research partnership

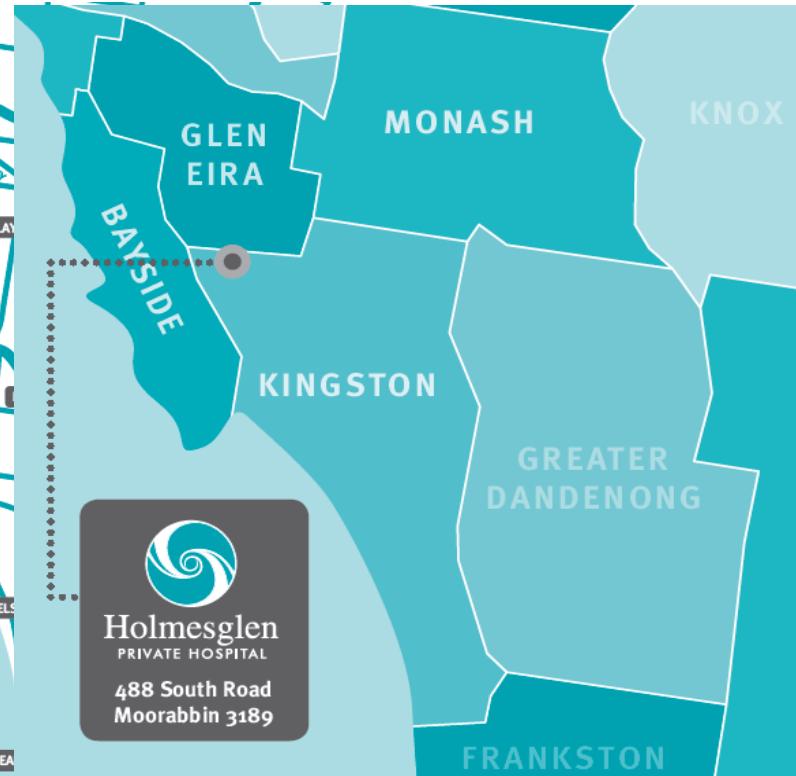
Making a difference together for
improved patient care...

Associate Professor Debra Kiegaldie & Ms Keryn Hopkins

The Partnership – a first for Australia!

- **New Holmesglen Private Hospital**
- **New Clinical Chair Role**
(Workforce & Simulation)
 - To drive innovation & applied research
- **New “Health Precinct”**





Why this partnership?

- Increased interest in **applied research** across TAFE sector, within Holmesglen and health care
- Opportunities for a critical partnership and collaboration – **health & education research outcomes**
- Increased access for Healthscope health professionals to world class **clinical simulation** facilities and quality education



What will this partnership bring?

- **Improve health service outcomes**

- Systems
- Education & Health Care Interventions
- Patient care
- Cost efficiency



■ Build capability

- **Organisational** capability
- **Workforce** capability
 - competent, capable, enthused health care workforce
- **Teaching** capability
 - faculty and health care workforce
- **Graduate** capability
 - work ready graduates
 - clinical placement opportunities at Healthscope
 - graduate employment opportunities at Healthscope

▪ Drive innovation & collaboration

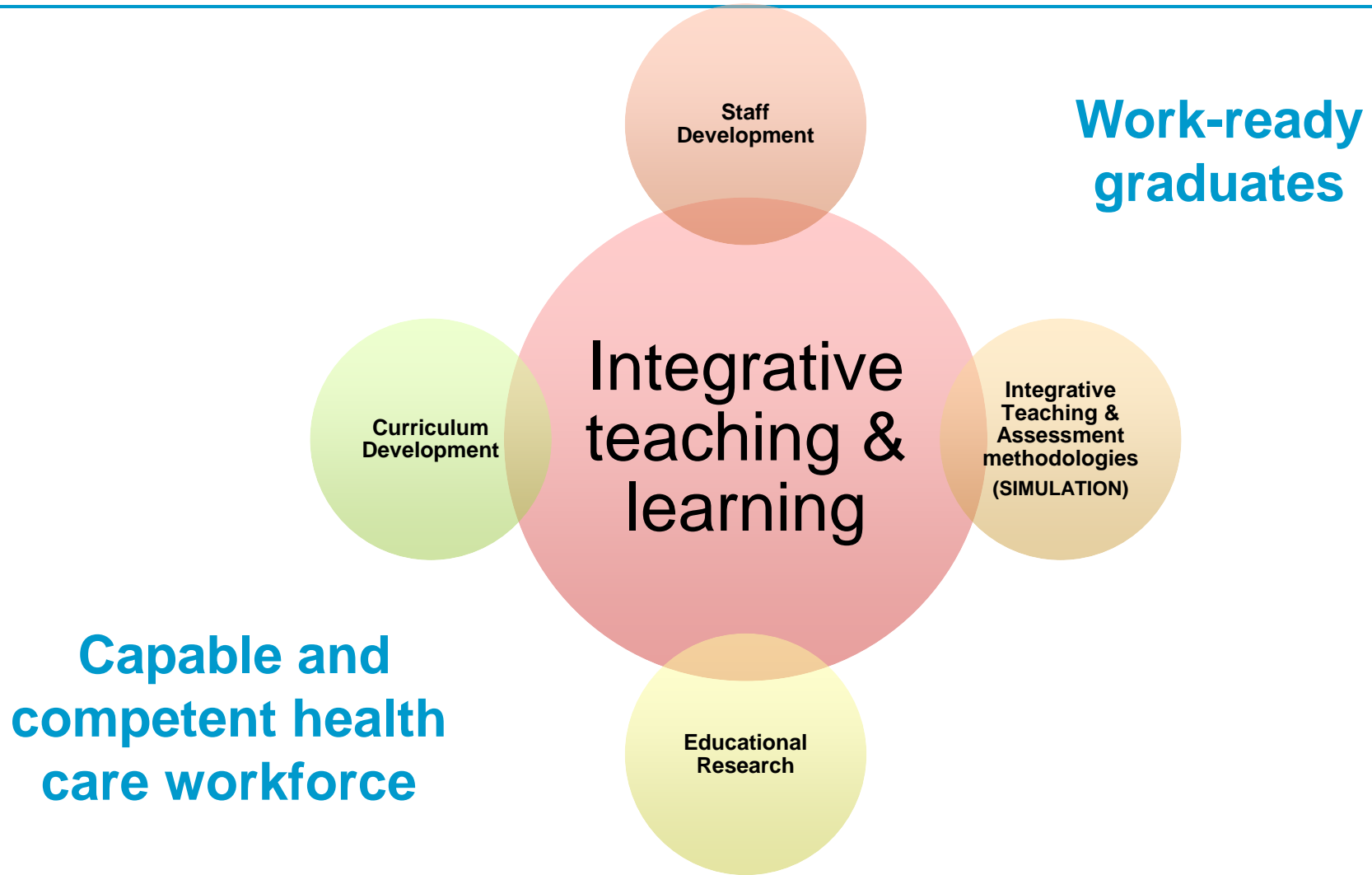
- **Education** innovation
 - Integrative teaching and learning
 - Simulation-based education
- **Health care** innovation
 - Models of care
 - Safety and Quality agenda

What will this partnership bring?

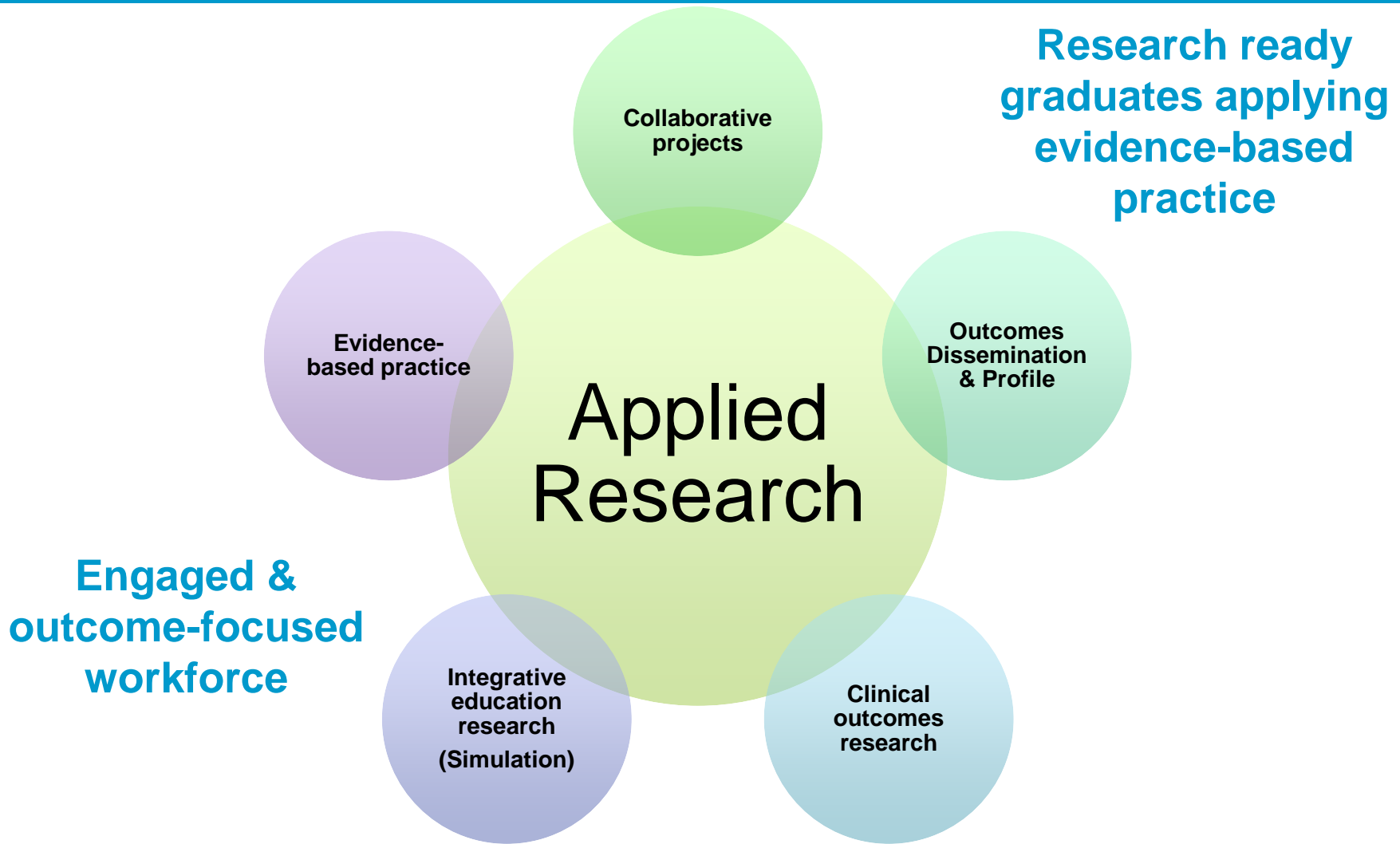
- **Raise profile – name, claim and celebrate!**
 - Locally
 - Nationally
 - Internationally



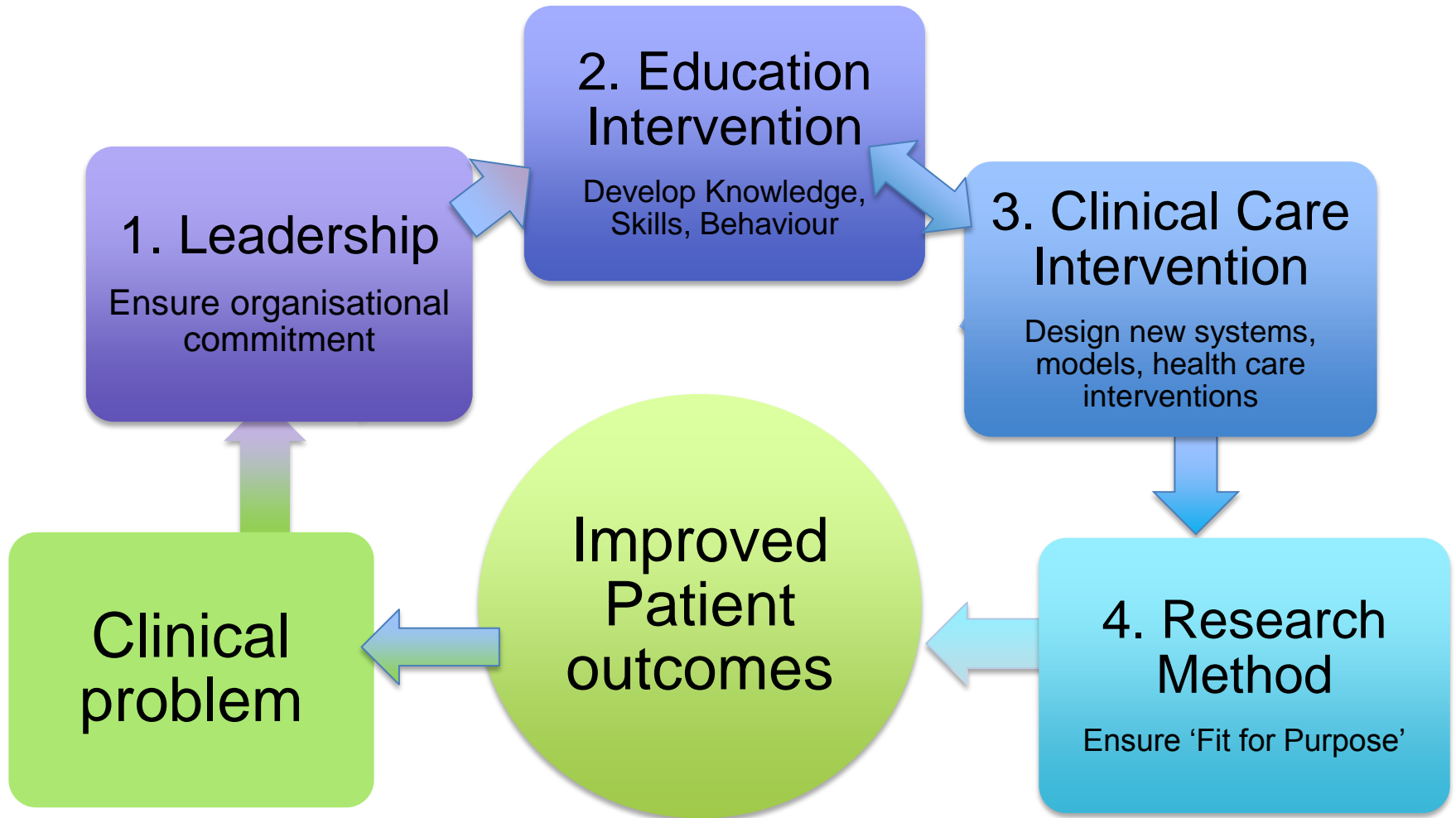
What will we do?



What will we do?



A model of applied research between TAFE & the health industry – The Four Pillars



Real world research for real world problems!

What matters to patients – matters to health professionals and matters to hospitals



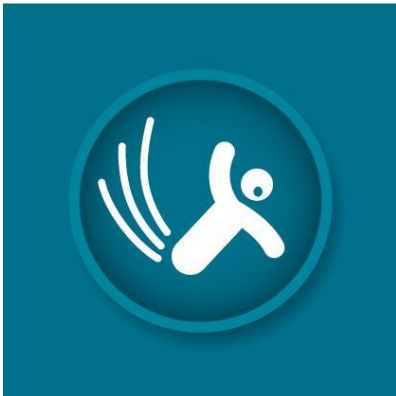
What matters.....



Patient & family
centred
communication



Medication
Safety



Preventing falls
& harm from
falls



Recognising &
responding to
clinical
deterioration



Ingredients for success

- Start small
- Teamwork critical
- Measure and report outcomes
- Celebrate successes

